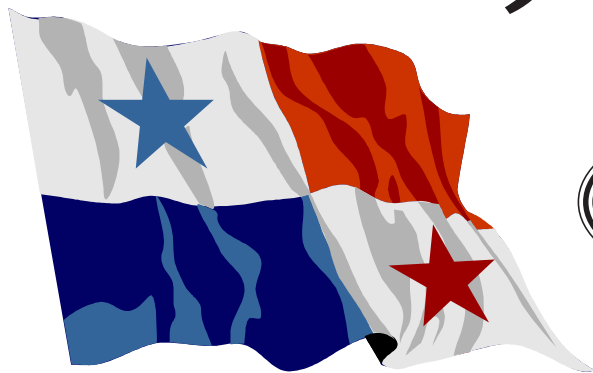


# Legendary Journeys

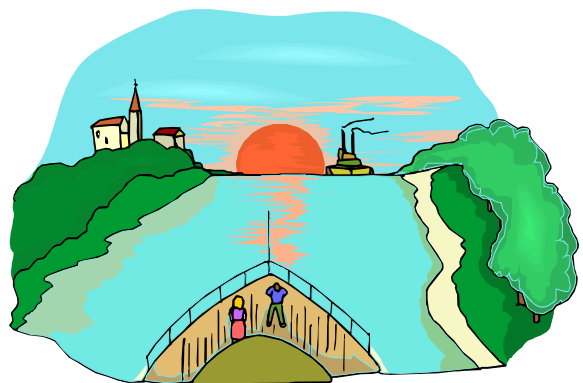
America's #1 Vacation Specialist

## PANAMA CANAL SUPER VALUE

2009 - 2010



rates valid from  
November 13, 2009



This brochure contains trips to the Panama Canal currently being offered by Legendary Journeys.

11 Florida Offices to serve you:

Englewood ♦ Ft. Myers ♦ Lakeland ♦ Largo ♦ Naples ♦ Ocala ♦ Port Charlotte ♦ Sarasota ♦ Sun City Center ♦ Venice ♦ Villages

Visit our website [GoLJ.travel](http://GoLJ.travel)

1 - 800 - 511 - 5411

Legendary Journeys plans Escorted Tours, Cruises & Cruise Tours to all corners of the planet. Whether it is the South Pacific, Asia & the Orient, Europe or your own backyard of North America... no one provides more choices at a better value than Legendary Journeys.

Legendary Journeys contracts directly with hotels, attractions and cruise lines. This enables us to provide you with the absolute best values! Legendary Journeys provides you with knowledgeable & experienced Tour Managers, Quality Transportation and Sightseeing. We provide a million dollar liability bond assuring your travel investment is protected!

Legendary Journeys is the most respected name in Escorted Cruises, Motorcoach Tours, Jet Tours and Cruise Tours. This SUPER VALUE BOOK has been prepared as a synopsis of travel programs that are available to you. All prices in this brochure are current at the time of printing and are subject to change without notice. Please visit our website where you can download the current detailed brochures.

As always, Legendary Journeys thanks you for your loyal support and we hope to show you a Legendary Journey soon.

## **CONTENTS**

1. All 170 sailings to Panama Canal in order by departure
2. Legendary Journeys Packaged Cruises, Cruise Tours & Tours:
  - Advance Notice & Diamond Deals : many other special group flyers!
3. Legendary Journeys General Information Page

CRUISE LINE:

SHIP NAME:

DEPARTURE:

DURATION:

START PORT

END PORT

PRICED FROM

ITINERARY:

CRUISE LINE:	SHIP NAME:	DEPARTURE:	DURATION:	START PORT	END PORT	PRICED FROM	ITINERARY:
Holland America	Zuiderdam	11/13/09	10 Night	Ft Lauderdale	Ft Lauderdale	SOLD OUT	Panama Canal
Holland America	Statendam	11/13/09	14 Night	Ft Lauderdale	San Diego	SOLD OUT	Westbound Cross Canal
Royal Caribbean	Jewel	11/20/09	10 Night	Miami	Miami	\$599	Panama Canal
Princess	Island	11/20/09	10 Night	Ft Lauderdale	Ft Lauderdale	SOLD OUT	Panama Canal
Celebrity	Infinity	11/22/09	13 Night	San Diego	Ft Lauderdale	\$999	Eastbound Cross Canal
Celebrity	Constellation	11/22/09	14 Night	Miami	San Diego	\$899	Westbound Cross Canal
Princess	Coral	11/22/09	15 Night	Ft Lauderdale	Los Angeles	\$1,419	Westbound Cross Canal
Holland America	Zuiderdam	11/23/09	10 Night	Ft Lauderdale	Ft Lauderdale	SOLD OUT	Panama Canal
Norwegian	Star	11/23/09	13 Night	Los Angeles	Miami	\$9,999	Eastbound Cross Canal
Holland America	Statendam	11/27/09	14 Night	San Diego	Ft Lauderdale	SOLD OUT	Eastbound Cross Canal
Crystal	Serenity	11/29/09	11 Night	Miami	Caldera	\$3,775	Westbound Cross Canal
Princess	Island	11/30/09	10 Night	Ft Lauderdale	Ft Lauderdale	\$3,074	Panama Canal
Royal Caribbean	Jewel	11/30/09	11 Night	Miami	Miami	\$779	Panama Canal
Holland America	Amsterdam	12/2/09	21 Night	Los Angeles	Los Angeles	\$1,399	Panama Canal
Holland America	Zuiderdam	12/3/09	10 Night	Ft Lauderdale	Ft Lauderdale	\$749	Panama Canal
Norwegian	Star	12/6/09	13 Night	Miami	Los Angeles	\$699	Westbound Cross Canal
Celebrity	Constellation	12/6/09	14 Night	San Diego	Miami	\$1,049	Eastbound Cross Canal
Princess	Coral	12/7/09	15 Night	Los Angeles	Ft Lauderdale	\$1,399	Eastbound Cross Canal
Princess	Island	12/10/09	10 Night	Ft Lauderdale	Acapulco	\$599	Panama Canal
Crystal	Serenity	12/10/09	11 Night	Caldera	Miami	\$3,400	Eastbound Cross Canal
Royal Caribbean	Jewel	12/11/09	10 Night	Miami	Miami	\$549	Panama Canal
Holland America	Zuiderdam	12/13/09	10 Night	Ft Lauderdale	Ft Lauderdale	\$749	Panama Canal
Holland America	Rotterdam	12/16/09	19 Night	Ft Lauderdale	San Diego	\$4,999	Westbound Cross Canal
Azamara	Journey	12/18/09	16 Night	Miami	San Diego	\$1,449	Westbound Cross Canal
Princess	Island	12/20/09	10 Night	Acapulco	Ft Lauderdale	\$2,174	Panama Canal
Regent	Mariner	12/20/09	16 Night	Los Angeles	Ft Lauderdale	\$7,465	Eastbound Cross Canal
Royal Caribbean	Jewel	12/21/09	12 Night	Miami	Miami	\$1,999	Panama Canal
Holland America	Statendam	12/21/09	18 Night	Ft Lauderdale	San Diego	\$1,349	Westbound Cross Canal
Princess	Coral	12/22/09	15 Night	Ft Lauderdale	Los Angeles	SOLD OUT	Westbound Cross Canal
Holland America	Zuiderdam	12/23/09	10 Night	Ft Lauderdale	Ft Lauderdale	SOLD OUT	Panama Canal
Holland America	Amsterdam	12/23/09	14 Night	Los Angeles	Ft Lauderdale	SOLD OUT	Eastbound Cross Canal
Regent	Voyager	12/28/09	16 Night	Ft Lauderdale	San Diego	\$7,420	Westbound Cross Canal
Princess	Island	12/30/09	10 Night	Ft Lauderdale	Acapulco	SOLD OUT	Panama Canal
Holland America	Zuiderdam	1/2/10	10 Night	Ft Lauderdale	Ft Lauderdale	\$849	Panama Canal
Norwegian	Star	1/2/10	14 Night	Los Angeles	Miami	\$999	Eastbound Cross Canal
Royal Caribbean	Jewel	1/2/10	9 Night	Miami	Miami	\$743	Panama Canal
Celebrity	Constellation	1/3/10	14 Night	Miami	San Diego	\$1,249	Westbound Cross Canal
Azamara	Journey	1/3/10	16 Night	San Diego	Miami	\$1,299	Eastbound Cross Canal
Princess	Coral	1/6/10	15 Night	Los Angeles	Ft Lauderdale	\$1,199	Eastbound Cross Canal
Holland America	Maasdam	1/8/10	14 Night	Ft Lauderdale	San Diego	\$1,199	Westbound Cross Canal
Princess	Island	1/9/10	10 Night	Acapulco	Ft Lauderdale	\$999	Panama Canal
Regent	Mariner	1/10/10	14 Night	Ft Lauderdale	Lima	\$8,365	Westbound Cross Canal
Royal Caribbean	Jewel	1/11/10	11 Night	Miami	Miami	\$935	Panama Canal
Holland America	Zuiderdam	1/12/10	10 Night	Ft Lauderdale	Ft Lauderdale	\$849	Panama Canal
Oceania	Regatta	1/14/10	16 Night	Miami	Los Angeles	\$3,508	Westbound Cross Canal
Norwegian	Star	1/16/10	14 Night	Miami	Los Angeles	\$999	Westbound Cross Canal
Celebrity	Constellation	1/17/10	14 Night	San Diego	Miami	\$1,449	Eastbound Cross Canal
Princess	Island	1/19/10	10 Night	Ft Lauderdale	Ft Lauderdale	\$1,029	Panama Canal
Princess	Coral	1/21/10	15 Night	Ft Lauderdale	Los Angeles	\$1,299	Westbound Cross Canal
Holland America	Zuiderdam	1/22/10	10 Night	Ft Lauderdale	Ft Lauderdale	\$849	Panama Canal
Royal Caribbean	Jewel	1/22/10	10 Night	Miami	Miami	\$875	Panama Canal
Holland America	Maasdam	1/22/10	14 Night	San Diego	Ft Lauderdale	\$1,199	Eastbound Cross Canal
Crystal	Symphony	1/23/10	11 Night	Miami	Caldera	\$3,025	Westbound Cross Canal
Princess	Island	1/29/10	10 Night	Ft Lauderdale	Ft Lauderdale	\$999	Panama Canal
Holland America	Zuiderdam	2/1/10	10 Night	Ft Lauderdale	Ft Lauderdale	\$949	Panama Canal
Royal Caribbean	Jewel	2/1/10	11 Night	Miami	Miami	\$919	Panama Canal
Crystal	Symphony	2/3/10	11 Night	Caldera	Miami	\$3,025	Eastbound Cross Canal
Holland America	Maasdam	2/5/10	14 Night	Ft Lauderdale	San Diego	\$1,299	Westbound Cross Canal
Princess	Coral	2/5/10	15 Night	Los Angeles	Ft Lauderdale	\$1,209	Eastbound Cross Canal
Princess	Island	2/8/10	10 Night	Ft Lauderdale	Ft Lauderdale	\$1,304	Panama Canal
Oceania	Regatta	2/9/10	16 Night	Los Angeles	Miami	\$3,508	Eastbound Cross Canal

CRUISE LINE:

SHIP NAME:

DEPARTURE:

DURATION:

START PORT

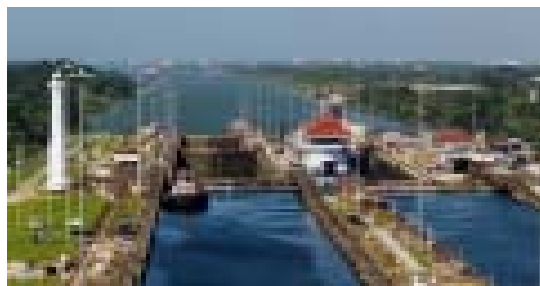
END PORT

PRICED FROM

ITINERARY:

CRUISE LINE:	SHIP NAME:	DEPARTURE:	DURATION:	START PORT	END PORT	PRICED FROM	ITINERARY:
Holland America	Zuiderdam	2/11/10	10 Night	Ft Lauderdale	Ft Lauderdale	\$1,049	Panama Canal
Royal Caribbean	Jewel	2/12/10	10 Night	Miami	Miami	\$875	Panama Canal
Crystal	Symphony	2/14/10	14 Night	Miami	Los Angeles	\$3,630	Westbound Cross Canal
Princess	Island	2/18/10	10 Night	Ft Lauderdale	Acapulco	\$999	Panama Canal
Holland America	Maasdam	2/19/10	14 Night	San Diego	Ft Lauderdale	\$1,299	Eastbound Cross Canal
Princess	Coral	2/20/10	15 Night	Ft Lauderdale	Los Angeles	\$1,199	Westbound Cross Canal
Holland America	Zuiderdam	2/21/10	10 Night	Ft Lauderdale	Ft Lauderdale	\$1,049	Panama Canal
Royal Caribbean	Jewel	2/22/10	11 Night	Miami	Miami	\$951	Panama Canal
Princess	Island	2/28/10	10 Night	Acapulco	Ft Lauderdale	\$899	Panama Canal
Celebrity	Constellation	2/28/10	13 Night	Miami	San Diego	\$1,249	Westbound Cross Canal
Holland America	Zuiderdam	3/3/10	10 Night	Ft Lauderdale	Ft Lauderdale	\$1,049	Panama Canal
Royal Caribbean	Jewel	3/5/10	10 Night	Miami	Miami	\$855	Panama Canal
Holland America	Maasdam	3/5/10	14 Night	Ft Lauderdale	San Diego	\$1,299	Westbound Cross Canal
Princess	Coral	3/7/10	15 Night	Los Angeles	Ft Lauderdale	\$1,199	Eastbound Cross Canal
Holland America	Statendam	3/8/10	18 Night	San Diego	Ft Lauderdale	\$1,499	Eastbound Cross Canal
Princess	Island	3/10/10	10 Night	Ft Lauderdale	Acapulco	\$899	Panama Canal
Holland America	Zuiderdam	3/13/10	10 Night	Ft Lauderdale	Ft Lauderdale	\$1,049	Panama Canal
Royal Caribbean	Jewel	3/15/10	11 Night	Miami	Miami	\$799	Panama Canal
Holland America	Maasdam	3/19/10	14 Night	San Diego	Ft Lauderdale	\$1,299	Eastbound Cross Canal
Princess	Island	3/20/10	10 Night	Acapulco	Ft Lauderdale	\$899	Panama Canal
Princess	Coral	3/22/10	15 Night	Ft Lauderdale	Los Angeles	\$1,199	Westbound Cross Canal
Royal Caribbean	Jewel	3/26/10	10 Night	Miami	Miami	\$899	Panama Canal
Celebrity	Constellation	3/28/10	14 Night	San Diego	Miami	\$1,099	Eastbound Cross Canal
Celebrity	Infinity	3/28/10	14 Night	Ft Lauderdale	San Diego	\$1,099	Westbound Cross Canal
Princess	Island	3/30/10	10 Night	Ft Lauderdale	Ft Lauderdale	\$999	Panama Canal
Holland America	Zuiderdam	3/31/10	10 Night	Ft Lauderdale	Ft Lauderdale	\$1,049	Panama Canal
Holland America	Maasdam	4/2/10	14 Night	Ft Lauderdale	San Diego	\$1,299	Westbound Cross Canal
Royal Caribbean	Jewel	4/5/10	11 Night	Miami	Miami	\$1,289	Panama Canal
Princess	Coral	4/6/10	15 Night	Los Angeles	Ft Lauderdale	\$1,199	Eastbound Cross Canal
Princess	Island	4/9/10	10 Night	Ft Lauderdale	Ft Lauderdale	\$999	Panama Canal
Holland America	Zuiderdam	4/10/10	10 Night	Ft Lauderdale	Ft Lauderdale	\$1,099	Panama Canal
Norwegian	Pearl	4/10/10	14 Night	Miami	Los Angeles	\$799	Westbound Cross Canal
Celebrity	Infinity	4/11/10	14 Night	San Diego	Ft Lauderdale	\$1,299	Eastbound Cross Canal
Norwegian	Sun	4/11/10	15 Night	Santiago	Miami	\$1,099	Panama Canal
Royal Caribbean	Jewel	4/16/10	10 Night	Miami	Miami	\$949	Panama Canal
Celebrity	Millennium	4/16/10	14 Night	San Juan	San Diego	\$999	Westbound Cross Canal
Holland America	Maasdam	4/16/10	14 Night	San Diego	Ft Lauderdale	\$1,299	Eastbound Cross Canal
Holland America	Ryndam	4/18/10	21 Night	Tampa	Vancouver	\$1,799	Westbound Cross Canal
Princess	Island	4/19/10	10 Night	Ft Lauderdale	Ft Lauderdale	\$999	Panama Canal
Celebrity	Mercury	4/19/10	16 Night	Charleston	Los Angeles	\$1,179	Westbound Cross Canal
Holland America	Zuiderdam	4/20/10	14 Night	Ft Lauderdale	San Diego	\$1,699	Westbound Cross Canal
Princess	Coral	4/21/10	15 Night	Ft Lauderdale	Los Angeles	\$1,299	Westbound Cross Canal
Celebrity	Infinity	4/25/10	15 Night	Ft Lauderdale	San Francisco	\$1,549	Westbound Cross Canal
Holland America	Statendam	4/25/10	17 Night	Ft Lauderdale	San Diego	\$1,499	Westbound Cross Canal
Royal Caribbean	Jewel	4/26/10	10 Night	Miami	Miami	\$999	Panama Canal
Princess	Island	4/29/10	15 Night	Ft Lauderdale	Los Angeles	\$1,699	Westbound Cross Canal
Princess	Royal	4/30/10	20 Night	Ft Lauderdale	Seattle	\$1,999	Westbound Cross Canal
Regent	Navigator	5/6/10	20 Night	Ft Lauderdale	San Francisco	\$7,865	Westbound Cross Canal
Princess	Sea	5/7/10	15 Night	Ft Lauderdale	San Francisco	\$1,409	Westbound Cross Canal
Holland America	Ryndam	9/10/10	21 Night	Vancouver	Tampa	\$2,199	Eastbound Cross Canal
Princess	Coral	9/21/10	15 Night	Los Angeles	Ft Lauderdale	\$1,749	Eastbound Cross Canal
Holland America	Ryndam	9/23/10	17 Night	San Diego	Tampa	\$1,799	Eastbound Cross Canal
Norwegian	Pearl	9/24/10	14 Night	Los Angeles	Miami	\$1,249	Eastbound Cross Canal
Royal Caribbean	Radiance	9/24/10	15 Night	San Diego	Tampa	\$1,599	Eastbound Cross Canal
Celebrity	Infinity	9/24/10	16 Night	Seattle	Ft Lauderdale	\$1,499	Eastbound Cross Canal
Holland America	Zuiderdam	9/25/10	19 Night	Vancouver	Ft Lauderdale	\$1,999	Eastbound Cross Canal
Celebrity	Millennium	9/27/10	14 Night	San Diego	San Juan	\$1,199	Eastbound Cross Canal
Holland America	Statendam	9/30/10	15 Night	San Diego	Ft Lauderdale	\$1,649	Eastbound Cross Canal
Celebrity	Mercury	10/1/10	17 Night	San Diego	Baltimore	\$1,499	Eastbound Cross Canal
Princess	Coral	10/6/10	10 Night	Ft Lauderdale	Acapulco	\$1,249	Westbound Cross Canal
Princess	Island	10/6/10	15 Night	San Francisco	Ft Lauderdale	\$1,999	Eastbound Cross Canal

CRUISE LINE:	SHIP NAME:	DEPARTURE:	DURATION:	START PORT	END PORT	PRICED FROM	ITINERARY:
Norwegian	Star	10/8/10	13 Night	Los Angeles	Miami	\$949	Eastbound Cross Canal
Princess	Sea	10/9/10	16 Night	San Francisco	Ft Lauderdale	\$1,599	Eastbound
Celebrity	Infinity	10/10/10	14 Night	Ft Lauderdale	Los Angeles	\$1,299	Westbound Cross Canal
Holland America	Zuiderdam	10/14/10	10 Night	Ft Lauderdale	Ft Lauderdale	\$1,299	Panama Canal
Holland America	Statendam	10/15/10	14 Night	Ft Lauderdale	San Diego	\$1,599	Westbound Cross Canal
Princess	Coral	10/16/10	10 Night	Acapulco	Ft Lauderdale	\$1,249	Eastbound Cross Canal
Princess	Island	10/21/10	15 Night	Ft Lauderdale	Los Angeles	\$1,749	Westbound Cross Canal
Holland America	Zuiderdam	10/24/10	10 Night	Ft Lauderdale	Ft Lauderdale	\$1,299	Panama Canal
Celebrity	Infinity	10/24/10	14 Night	Los Angeles	Ft Lauderdale	\$1,299	Eastbound Cross Canal
Princess	Coral	10/26/10	10 Night	Ft Lauderdale	Ft Lauderdale	\$1,099	Panama Canal
Holland America	Statendam	10/29/10	14 Night	San Diego	Ft Lauderdale	\$1,599	Eastbound Cross Canal
Crystal	Symphony	11/2/10	19 Night	New York	Los Angeles	\$4,930	Westbound Cross Canal
Holland America	Zuiderdam	11/3/10	10 Night	Ft Lauderdale	Ft Lauderdale	\$1,299	Panama Canal
Norwegian	Star	11/4/10	15 Night	Miami	Los Angeles	\$1,149	Westbound Cross Canal
Princess	Coral	11/5/10	10 Night	Ft Lauderdale	Ft Lauderdale	\$1,199	Panama Canal
Princess	Island	11/5/10	15 Night	Los Angeles	Ft Lauderdale	\$1,899	Eastbound Cross Canal
Celebrity	Infinity	11/7/10	14 Night	Ft Lauderdale	Los Angeles	\$1,299	Westbound Cross Canal
Royal Caribbean	Jewel	11/12/10	10 Night	Ft Lauderdale	Ft Lauderdale	\$879	Panama Canal
Holland America	Statendam	11/12/10	14 Night	Ft Lauderdale	San Diego	\$1,599	Westbound Cross Canal
Holland America	Zuiderdam	11/13/10	10 Night	Ft Lauderdale	Ft Lauderdale	\$1,299	Panama Canal
Princess	Coral	11/15/10	10 Night	Ft Lauderdale	Ft Lauderdale	\$1,199	Panama Canal
Norwegian	Star	11/20/10	15 Night	Los Angeles	Miami	\$1,239	Eastbound Cross Canal
Princess	Island	11/20/10	15 Night	Ft Lauderdale	Los Angeles	\$1,949	Westbound Cross Canal
Celebrity	Infinity	11/21/10	14 Night	Los Angeles	Ft Lauderdale	\$1,399	Eastbound Cross Canal
Royal Caribbean	Jewel	11/22/10	11 Night	Ft Lauderdale	Ft Lauderdale	\$939	Panama Canal
Holland America	Zuiderdam	11/23/10	10 Night	Ft Lauderdale	Ft Lauderdale	\$1,399	Panama Canal
Princess	Coral	11/25/10	10 Night	Ft Lauderdale	Ft Lauderdale	\$1,049	Panama Canal
Holland America	Statendam	11/26/10	14 Night	San Diego	Ft Lauderdale	\$1,599	Eastbound Cross Canal
Royal Caribbean	Jewel	12/3/10	10 Night	Ft Lauderdale	Ft Lauderdale	\$879	Panama Canal
Holland America	Zuiderdam	12/3/10	10 Night	Ft Lauderdale	Ft Lauderdale	\$1,199	Panama Canal
Princess	Coral	12/5/10	10 Night	Ft Lauderdale	Ft Lauderdale	\$1,199	Panama Canal
Norwegian	Star	12/5/10	13 Night	Miami	Los Angeles	\$949	Westbound Cross Canal
Princess	Island	12/5/10	15 Night	Los Angeles	Ft Lauderdale	\$1,899	Eastbound Cross Canal
Holland America	Statendam	12/10/10	14 Night	Ft Lauderdale	San Diego	\$1,499	Westbound Cross Canal
Holland America	Zuiderdam	12/13/10	10 Night	Ft Lauderdale	Ft Lauderdale	\$1,199	Panama Canal
Royal Caribbean	Jewel	12/13/10	11 Night	Ft Lauderdale	Ft Lauderdale	\$939	Panama Canal
Princess	Coral	12/15/10	15 Night	Ft Lauderdale	Los Angeles	\$2,549	Westbound Cross Canal
Celebrity	Constellation	12/18/10	15 Night	Ft Lauderdale	San Diego	\$1,999	Westbound Cross Canal
Princess	Island	12/20/10	10 Night	Ft Lauderdale	Ft Lauderdale	\$1,749	Panama Canal
Regent	Navigator	12/20/10	18 Night	San Francisco	Ft Lauderdale	\$8,565	Eastbound Cross Canal
Holland America	Amsterdam	12/22/10	14 Night	Los Angeles	Ft Lauderdale	\$1,799	Eastbound Cross Canal
Holland America	Zuiderdam	12/23/10	10 Night	Ft Lauderdale	Ft Lauderdale	\$1,799	Panama Canal
Azamara	Journey	12/23/10	16 Night	Miami	San Diego	\$2,699	Westbound Cross Canal
Royal Caribbean	Jewel	12/24/10	10 Night	Ft Lauderdale	Ft Lauderdale	\$2,039	Panama Canal
Holland America	Statendam	12/24/10	14 Night	San Diego	Ft Lauderdale	\$1,799	Eastbound Cross Canal
Regent	Voyager	12/27/10	17 Night	Ft Lauderdale	San Francisco	\$10,565	Westbound Cross Canal
Princess	Island	12/30/10	10 Night	Ft Lauderdale	Ft Lauderdale	\$1,899	Panama Canal
Princess	Coral	12/30/10	15 Night	Los Angeles	Ft Lauderdale	\$2,299	Eastbound Cross Canal



This brochure will be updated regularly so check back often!

Legendary Journeys Presents  
**Advance Notice**



A special trip offered *EXCLUSIVELY* in the United States by Legendary Journeys!  
SPACE IS TOTALLY FIRST CALL, FIRST CONFIRMED...CALL 800-511-5411

Celebrity Cruise Lines beautiful INFINITY or CONSTELLATION

# FLA-CAL PANAMA CANAL

South Florida to San Diego (or reverse)

FREE Air ~ FREE Transfers to/from South Florida Pier (Florida guests) ~ FREE Transfers to/from San Diego Pier (California guests) ~ San Diego Pre/Post Tour (Florida guests) ~ South Florida Pre/Post Tour (California guests) ~ Grand Cayman ~ Cartagena, Columbia ~ Full Transit of Panama Canal ~ Panama City ~ Costa Rica ~ Huatulco ~ Puerto Vallarta ~ Acapulco ~ Cabo San Lucas

**CELEBRITY INFINITY:** October 11; October 24; November 8; November 21 (Thanksgiving), 2009;  
**CELEBRITY CONSTELLATION:** November 22 (Thanksgiving); December 5, 2009; January 3, 2010

### Features:

- 15 Day cruise on choice of CELEBRITY INFINITY (sailing to/from Ft Lauderdale) or CELEBRITY CONSTELLATION (sailing to/from Miami)
- (Florida guests) FREE Air one way from Select Florida Cities to San Diego (or reverse) (other cities on request) or you may take a \$125 No Air / No Transfer credit.
- (California guests ONLY) FREE Air one way from San Diego or Los Angeles to South Florida (or reverse) or you may take a \$125 No Air / No transfer credit.
- FREE Transfers (Florida guests only) to/from South Florida Pier from Select Florida cities. FREE Transfers (California guests only) to/from San Diego Pier from San Diego airport, Oceanside, San Clemente, Mission Viejo, Santa Ana, Anaheim, Los Angeles, Burbank, & Santa Clarita
- FREE 2 Day / 1 Night San Diego Pre/Post Tour (Florida & USA guests) featuring First Class (3 star) hotel and transfers
- FREE 2 Day / 1 Night South Florida Pre/Post Tour (California guests ONLY) featuring First Class (3 star) hotel and transfers



### CRUISE RATES:

**Category Run of Ship \$999**

**All categories are available for small supplements.**

**PLEASE NOTE:** Above rate is based on our October 11 & October 24, 2009 departures on the Celebrity Infinity.

**CHECK DISCOUNT:** You may deduct \$100 for this type of payment.

All rates plus \$289 port & non-commissionable fees and \$309.13 government taxes. A fuel surcharge may be added to new reservations and you would be advised at time of booking if any fuel surcharge exists. Single/Triple/Quad Rates on request.

**DEPOSIT DUE:** \$600 deposit due upon booking. Final Payment due 90 days prior to departure.

**CANCELLATION PENALTIES:** Deposit is non refundable; 90 - 61 days prior 50%; 60 - 31 days prior 75%; within 30 days 100%.



Legendary Journeys Presents  
**Advance Notice**



A special trip offered EXCLUSIVELY in the United States by Legendary Journeys!  
SPACE IS TOTALLY FIRST CALL, FIRST CONFIRMED...CALL 800-511-5411

MSC Cruise Lines beautiful BRAND NEW msc POESIA

# PANAMA CANAL & SOUTHERN CARIBBEAN

**2009: November 20 (THANKSGIVING), November 30, December 10**

FREE BUS ~ Choice of Itinerary & Do a BACK TO BACK CRUISE for even better value! ~ Ft Lauderdale ~ Curacao ~ Aruba ~ Cartagena ~ Aruba ~ Cristobal & Panama Canal ~ San Juan ~ St Kitts ~ Barbados ~ Martinique ~ St Maarten ~ Grand Cayman ~ Costa Rica ~ Cancun

### Features:

- 11 Day cruise on brand new MSC POESIA (pronounced PO-AH-SEE-AH)
- FREE Bus from Select Florida Cities or you may take a \$30 Transfer / Parking credit.
- FREE Special Legendary Journeys Cocktail Party

### **November 20, 2009 (THANKSGIVING)**

Ft Lauderdale; Curacao; Aruba; Cartagena, Columbia; Cristobal, Panama & **optional** shore excursion into Panama Canal; Playa del Carmen, Mexico (Cancun); Ft Lauderdale

### **November 30, 2009**

Ft Lauderdale; San Juan, St Kitts, Barbados, Martinique, St Maarten, Nassau, Ft Lauderdale

### **December 10, 2009**

Ft Lauderdale; Grand Cayman; Cartagena, Columbia; Cristobal, Panama & **optional** shore excursion into Panama Canal; Puerto Limon, Costa Rica; Playa del Carmen, Mexico (Cancun); Ft Lauderdale

**Or Combine Any Two Cruises for a 21-day Vacation or even all three for a 31-day Super Cruise! ASK FOR SPECIAL DISCOUNTS for back to backs!**



### CRUISE RATES:

Category 1	Inside	\$599
Category 2	Inside	\$629
Category 3	Inside	\$659
Category 4	Outside	\$749
Category 5	Obstructed	\$799
Category 6	Balcony	\$949
Category 7	Balcony	\$989
Category 8	Balcony	\$1029
Category 9	Superior	\$1099
Category 10	Superior	\$1129
Category 11	Superior	\$1159
Category 12	Suite	\$1699

Rates **VALID** for November 30 & December 10, 2009 departures. Please ADD \$50 for the November 20 departure.

**CHECK DISCOUNT:** You may deduct \$100 for this type of payment.

All rates plus \$200 port & non-commissionable fees and \$89 government taxes. A fuel surcharge may be added to new reservations and you would be advised at time of booking if any fuel surcharge exists. Single/Triple/Quad Rates on request.

**DEPOSIT DUE:** \$500 deposit due upon booking. Final Payment due 90 days prior to departure.

**CANCELLATION PENALTIES:** Deposit is non-refundable; 90 - 61 days prior 50%; 60 - 31 days prior 75%; within 30 days 100%.

Legendary Journeys Presents  
**Advance Notice**



A special trip offered *EXCLUSIVELY* in the United States by Legendary Journeys!  
SPACE IS TOTALLY FIRST CALL, FIRST CONFIRMED...CALL 800-511-5411

NCL Cruise Lines beautiful NORWEGIAN STAR

# PANAMA CANAL FULL Crossing

Los Angeles to Miami (or reverse)

**2009:** November 22 (Thanksgiving), December 6

**2010:** January 1, January 16

FREE Air ~ Los Angeles Pre/Post Tour ~ Cabo san Lucas ~ Acapulco ~ Huatulco / Ixtapa ~ Puntarenas, Costa Rica ~ Full Canal Crossing ~ Cartagena ~ Puerta Quetzal ~ Miami ~ Free Bus

### Features:

- 14 Day cruise (November 22 & December 6 departures) or 15 Day cruise (January 1 & January 16 cruise) on NORWEGIAN STAR
- FREE Air from Select Florida Cities to Los Angeles (or reverse. other cities on request) or you may take a \$100 No Air / No Transfer credit.
- FREE 2 Day / 1 Night Los Angeles Pre/Post Tour featuring First Class (3 star) hotel and transfers
- FREE Transfers from Select Florida Cities to Miami (or reverse) or you may take a \$20 Transfer / Parking credit

November 22 & January 1: Los Angeles to Miami

December 6 & January 16: Miami to Los Angeles



### CRUISE RATES:

**Category Run of Ship \$999**

**All categories are available for small supplements.**

**CHECK DISCOUNT:** You may deduct \$100 for this type of payment.

All rates plus \$200 port & non-commissionable fees and \$289 government taxes. A fuel surcharge may be added to new reservations and you would be advised at time of booking if any fuel surcharge exists. Single/Triple/Quad Rates on request.

**DEPOSIT DUE:** \$600 deposit due upon booking. Final Payment due 90 days prior to departure.

**CANCELLATION PENALTIES:** Deposit is non refundable; 90 - 61 days prior 50%; 60 - 31 days prior 75%; within 30 days 100%.



Legendary Journeys Presents  
**Advance Notice**



A special trip offered EXCLUSIVELY in the United States by Legendary Journeys!  
SPACE IS TOTALLY FIRST CALL, FIRST CONFIRMED...CALL 800-511-5411

Carnival Cruise Lines beautiful CARNIVAL ELATION

# PANAMA CANAL

San Diego to Tampa/Mobile

FREE Air ~ San Diego Pre Tour ~ ONLY PANAMA CANAL CRUISE TO TAMPA & MOBILE! ~  
Cabo San Lucas ~ Acapulco ~ Costa Rica ~ Daylight Transit Panama Canal ~ Cartagena,  
Columbia ~ Grand Cayman ~ Tampa ~ Mobile ~ FREE Bus Transfers from Tampa to Select  
Florida Cities ~ "ADD A 5 DAY LAS VEGAS PRE TOUR FOR JUST \$199!

**April 28, 2010**

### Features:

- 16 Day cruise on CARNIVAL ELATION (to Mobile, 15 days to Tampa)
- FREE Air from Select Florida Cities to San Diego (other cities on request) or you may take a \$150 No Air / No Transfer credit.
- FREE 3 Day / 2 Night San Diego Pre Tour featuring First Class (3 star) hotel and transfers
- FREE Transfers from Tampa Pier (only if you disembark the ship in Tampa) to Select Florida Cities on I-75; US-19; plus Lakeland, New Port Richey, Orlando, Spring Hill, The Villages; or you may take a \$20 Transfer credit (you can stay on ship and sail to Mobile.)

## **ADD 5 DAY LAS VEGAS PRE TOUR**

**April 26 - 30, 2010 from just \$199**

Riviera or Stratosphere Hotel \$199 Double/Triple  
Imperial Palace Hotel \$279 Double/Triple  
Excalibur Hotel \$329 Double/Triple  
Flamingo Hilton Hotel \$359 Double/Triple

Want to do even more? You can enjoy the world's most exciting city on your Panama Canal Cruise and receive FREE AIRFARE! It's like two vacations in one! Fly to Las Vegas and enjoy 5 Days/4 Nights on the Las Vegas strip at your choice of hotel accommodations. Transfers at the Las Vegas Airport are included and scenic transfers from Las Vegas to the San Diego pier are also included. Don't miss this wonderful value! With other tours YOU ARE GOING TO PAY MORE AND YOU ARE GOING TO GET LESS ...GUARANTEED!

### CRUISE RATES:

Category 4A Inside	\$1099
Category 4B Inside	\$1129
Category 4C Inside	\$1159
Category 4D Inside	\$1189
Category 6A Outside	\$1289
Category 6B Outside	\$1319
Category 6C Outside	\$1349
Category 6D Outside	\$1379
Category 6E Outside	\$1409

**CHECK DISCOUNT:** You may deduct \$100 for this type of payment.

All rates plus \$299 port & non-commissionable fees and \$279 government taxes. A fuel surcharge may be added to new reservations and you would be advised at time of booking if any fuel surcharge exists. Single/Triple/Quad Rates on request.

**DEPOSIT DUE:** \$600 deposit due upon booking. Final Payment due 90 days prior to departure.

**CANCELLATION PENALTIES:** Deposit is non refundable; 90 - 61 days prior 50%; 60 - 31 days prior 75%; within 30 days 100%.



LEGENDARY JOURNEYS Presents Our Exclusive



# *Diamond Deal*



*This special trip is offered EXCLUSIVELY in the United States by Legendary Journeys!*

**SPACE IS TOTALLY FIRST CALL, FIRST CONFIRMED...CALL 800-511-5411**

Princess Cruise Lines beautiful CORAL PRINCESS

## **2 DAYS IN PANAMA CANAL**

Ft Lauderdale to Los Angeles (or reverse)

**2009: November 22 (THANKSGIVING) (California to Florida); November 6**

FREE AIR ~ Los Angeles Pre/Post Tour ~ FREE BUS to/from Ft Lauderdale Pier ~ Aruba ~ Cartagena ~ 2 Days in Panama Canal ~ Panama City ~ Costa Rica ~ Huatulco ~ Acapulco ~ Cabo San Lucas

# **17 DAYS JUST \$699!**

### Features:

- 16 Day cruise on CORAL PRINCESS
- FREE Bus from/to Select Florida cities and the Ft Lauderdale pier
- FREE One Way Air to/from Los Angeles to Ft Lauderdale or to/from Select Florida cities to Los Angeles or you may take a \$150 No Air / No Transfers credit (Other cities on request from any gateway city)
- FREE 2 Day / 1 Night Los Angeles Pre/Post Tour including first class (3 star) hotel & transfers. NOTE TO CALIFORNIA GUESTS: You may replace Los Angeles Pre/Post tour with Ft Lauderdale Pre/Post Tour including all transfers at no additional charge.
- Port taxes are \$375; Government taxes are \$232

---

Call For Reservations TODAY As This FLASH Special is strictly FIRST CALL, FIRST CONFIRMED!

## **Legendary Journeys**

**800-511-5411 [www.GoLJ.travel](http://www.GoLJ.travel)**



Legendary Journeys DIAMOND DEAL specials are exclusive rates not available ANYWHERE BUT Legendary Journeys. Rates are based on minimum rates and include port charges. Government taxes and fuel surcharges are additional. (note fuel surcharge may be eliminated or refunded to you as a shipboard credit. Ask your agent for current details) Reservations require full payment at time of booking and are non refundable. Rates reflect the lowest category available. Higher categories are available for additional charge. All sailings dates may not be included in the lowest rate and may have small supplements. Please review Cruise Lines brochure for complete rules and client responsibilities.

# Legendary Journeys, Inc.

## General Information

**DEPOSIT & FINAL PAYMENT:** A per person deposit is due to confirm reservation. Fares do not include non commissionable fees, additional service charges or insurance payment. Departure Taxes, Visa's and the like are additional expenses paid by the passenger. Legendary Journeys will assist you in getting a VISA if your requires. Full Payment is due 90 days prior to departure.

**CANCELLATION POLICY:** Loss of deposit for cancellation after booking. After Final Payment the penalties are as follows: 90 - 46 days prior - 50%; 45 - 31 days prior - 75%; within 30 days - non refundable. Percentages apply to the total cost of the tour. Diamond Deals are non-refundable. These are general cancellation fees, some of our promotions are non-refundable after booking, in which case please see specific notation on front of flyer.

**PRICING:** All prices in this brochure are current at the time of printing and are subject to change without notice.

**REVISION FEES:** Any changes made to a reservation after deposit is subject to a minimum \$35 Revision Fee per occurrence. Revision Fees (including Premium Air Fees and Choose Your Cabin) are non refundable and can not be insured.

**CABIN ASSIGNMENTS:** The cruise line will only assign a guarantee in the cabin category you purchase and the cabin assignment will come in your documents.

**AIR DEVIATION:** If your tour includes air, the flight schedules are for the scheduled arrival & departure days of the trip as indicated on the first page of the flyer. If you wish to travel on dates, other than what would be standard departure and return dates this must be requested at the time of reservation/deposit. There is a Premium Air fee of \$49 for this deviation as well as fare difference (if any).

**PRE TOURS, POST TOURS & UPGRADES:** MUST be paid in FULL at the time of reservation.

**DISCOUNTS:** Any discounts/ coupons must be **pre-approved** by Legendary Journeys to be accepted on Legendary Journeys group programs. Many coupons offered by cruise lines and other suppliers specifically exclude applying acceptance to group travel. Because our group departures are highly discounted each coupon or discount must be reviewed by Legendary Journeys to determine if they can be applied. A service fee may be applied to the acceptance of discount coupon and that amount will be deducted from the coupon value. Additionally, all discounts and coupons apply to the first and second passenger ONLY traveling in a cabin/room.

**DOCUMENTS:** You will receive your documents approximately 7 days prior to departure. Passengers requesting documents be shipped to a Canadian address will be charged a \$50 handling fee. Documents shipped to any other country outside the United States will be charged a \$100 handling fee.

**BAGGAGE ALLOWANCE:** Regardless of the length of the trip you are allowed one checked bag and one carry-on per person. Carry-on Bag, should not exceed the dimensions of 12"x11"x6" and checked bag should not exceed the dimensions 30"x21"x11" and weight not exceeding 50 lbs.

**TIPPING:** Legendary Journeys does not pay gratuities to your Tour Manager or Driver. We recommend you tip for good service based on the following industry standards: Overnight Tours: Tour Manager \$3 Per Person Per Day, Driver \$2 Per Person Per Day; Day Trips: Tour Manager \$2 Per Person Per Day, Driver \$1 Per Person Per Day. Cruise tipping as per ship guidelines.

**PROOF OF CITIZENSHIP:** Cruises and Tours that leave the Continental United States will require PROOF OF CITIZENSHIP. For Cruises & Tours this means a passport. You MUST check with U.S. Customs (for Americans or your Foreign Consulate office if you are not a U.S. citizen) to ensure proper documentation. U.S. rules for re-entering the United States are evolving and may require a passport. This is your only notice about providing proof of citizenship and passport. Legendary Journeys will not be responsible for your proper identification.

**RESPONSIBILITY:** The responsibility of Legendary Journeys is strictly limited. As the operator we sell the services of hotels, restaurants, attractions, cruises, etc. The operator is not responsible for any intentional or unintentional actions or omissions by suppliers. Legendary Journeys reserves the right to substitute any services of similar or equal quality. Legendary Journeys cannot control the circumstances, causes, effects, weather, strikes, bankruptcies, etc. of our suppliers. It is absolutely clear to your acceptance of participation in this trip that Legendary Journeys cannot guarantee airlines, flight times, hotels, attractions, shows, restaurants, Motorcoach vendors, etc. and unforeseen changes that might occur in the future. Therefore, Legendary Journeys, acting as intermediary or as an agent for these suppliers retains its rights to modify the itinerary components of the itinerary or the use of suppliers that is best for the operation of the tour. Furthermore, your claims about these unforeseen changes has in no way an effect on your decision to cancel or in waiving cancellation penalties that will be imposed as a result of your cancellation. Additionally, all requests (such as flight seating, hotel room types, etc.) are requests that cannot be guaranteed and your participation in the tour in no way assumes that you have been given any guarantees. Legendary Journeys is registered with the State of Florida as a Seller of Travel, registration no. ST29220.

C: 11/13/09



## Legendary Journeys

America's #1 Vacation Specialist



New Specials Added Daily at GoLJ.travel ~ Contact us at 1 - 800 - 511 - 5411

<b>Main Office:</b>	Tallywood Plaza 3474 17th Street	Sarasota, FL 34235	(941) 953-7988
<b>Englewood:</b>	Investor Choice Bldg. 1177 S. McCall Rd.	Englewood FL 34223	(941) 681-3336
<b>Ft. Myers:</b>	1500 Colonial Blvd. Unit 223	Ft. Myers, FL 33907	(239) 433-9200
<b>Lakeland:</b>	120 E. Pine St. # 8 Yarnell Bldg	Lakeland, FL 33801	(863) 904-0219
<b>Largo:</b>	801 West Bay Drive Suite 500	Largo, FL 33770	(727) 559-7200
<b>Naples:</b>	2335 N. Tamiami Trail # 402	Naples, FL 34103	(239) 417-8400
<b>Ocala:</b>	Jasmine Plaza 6130A SR 200	Ocala, FL 34476	(352) 291-9300
<b>Port Charlotte:</b>	Omni Executive Center 4055 Tamiami Trail #7	Port Charlotte, FL 33952	(941) 743-3600
<b>Sun City Center:</b>	Cypress Village Plaza 3818 Sun City Center Blvd	SCC, FL 33573	(813) 633-4521
<b>The Villages:</b>	15561 S. US Hwy 441 Summerfield, FL 34491	(352) 751-0022	(352) 307-0068
<b>Venice:</b>	Venice Holiday Inn 455 US Hwy 41 Bypass N Suite 111	Venice, FL 34285	(941) 484-7030